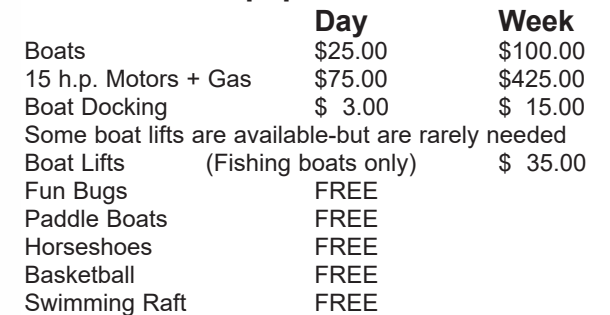
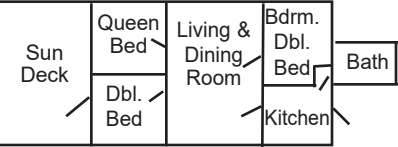


Osakis, MN 56360

Cabin Layouts

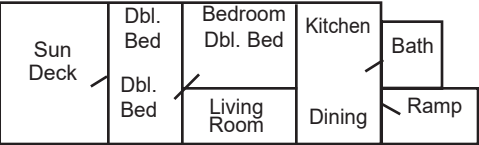
CABIN NO. 1

Knotty Pine
1 Queen Bed • 2 Double Beds • 3 Bedroom



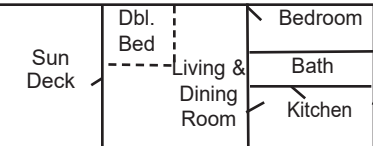
CABIN NO. 2

Knotty Pine
Wheelchair Access • 3 Double Beds



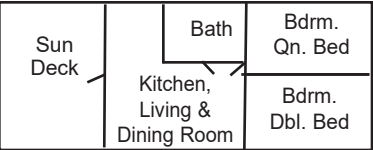
CABIN NO. 3

Knotty Pine
Total Electric • 2 Double Beds



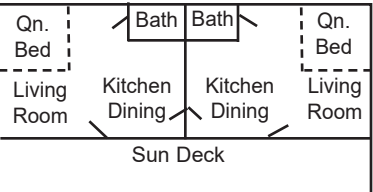
CABIN NO. 4

Knotty Pine
1 Queen Bed • 1 Double Bed • 2 Bedroom



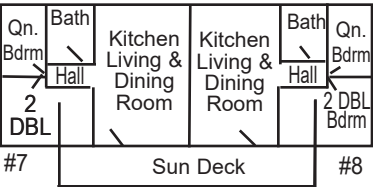
CABIN NO. 5 & 6

Sleeps up to 2 people each



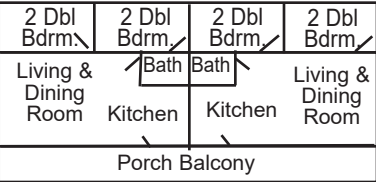
CABIN NO. 7 & 8

Knotty Pine
1 Queen Bed • 2 Double Beds



UNITS 9 & 10

4 Double Beds - 2 Bedrooms
Above Lodge
Total Electric



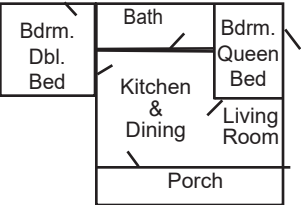
#9

#10

UNIT 11

1 Queen Bed
1 Double Bed
2 Bedrooms

Wheelchair Accessible
Lodge Ground Floor

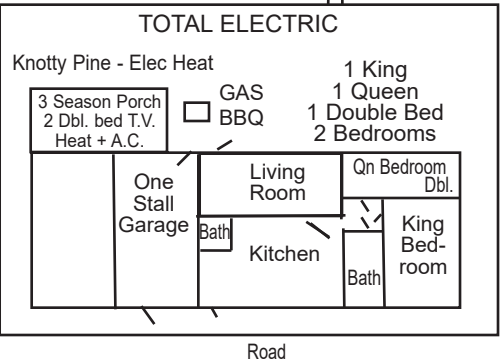


SORRY
NO PETS

UNIT NO. 12

PRIVATE HOUSE
Lake Front

Private
Dock & Lift



ALL CABINS ARE NON SMOKING

2026 BASE RATE			Spring & Fall May 9 - May 30 Aug. 22 - Oct. 24		Summer May 30 - Aug. 22 WEEKLY ONLY SAT. - SAT.	
All cabins are furnished with full kitchens, bedding - heat - showers - air conditioned - microwaves - coffee maker Color T.V.'s with Satellite and Wireless Internet - bring your own towels						
Cabin 1 KNOTTY PINE	3 Bedroom	2 bedrooms w/double beds 1 bedroom w/Queen bed	4 people	1,125	6 people	1,375
Cabin 2 WHEELCHAIR ACCESSIBLE KNOTTY PINE	3 Double Beds	1 bedroom w/double bed 2nd bedroom w/2 double beds	4 people	1,125	6 people	1,375
Cabin 3 TOTAL ELECTRIC KNOTTY PINE	2 Double Beds	1 bedroom w/double bed 1 double bed in front room	2 people 4 people	925 1000	4 people	1,200
Cabin 4 KNOTTY PINE	2 Bedroom	1 bedroom w/double bed 1 bedroom w/Queen bed	2 people 4 people	800 875	4 people	1,075
Cabin 5 or 6 Cabin 5 & 6 together	1 Queen Bed	One room cabin w/bath Used as one 2 rooms/2 baths 2 Kitchens - 2 TV's	2 people 4 people	750 925	2 people 4 people	900 1,125
Cabin 7 or 8 KNOTTY PINE	1 Queen Bed 2 Double Beds	1 bedroom - 1 queen 2nd bedroom - 2 double	4 people	1000	5 people	1,225
Units 9 or 10 Above Lodge TOTAL ELECTRIC	2 Bedroom 4 Double Beds	1 bedroom w/2 double beds 2nd bedroom w/2 double beds	4 people	1000	6 people	1,175
Unit 11 - Lodge	2 Bedroom Wheel Chair Accessible	1 bedroom w/Queen bed 2nd bedroom w/double bed Electric Heat	2 people 4 people	900 975	4 people	1,100
An All Modern 2 Bedroom Total Electric House Unit No. 12 Boat Lift SORRY NO PETS Dishwasher, 1 1/2 bath 3 Season Porch • Knotty Pine • 2 Double Beds • T.V. • Elec. Heat, Air Conditioning			4 people	1,225	6 people	1,575
Over base rate per person \$35/day \$200/week Deposit required - \$400.00 per week per cabin spring & fall Deposit required - \$500.00 per week per cabin summer Deposit required - \$600 for cabin 12				Day guest charge \$10.00 per person per day. *Guests must register at Lodge.* We reserve the right to limit		
CABIN NIGHTLY RATES - Spring & Fall Only (Cabins: 3, 4, 7, 8, 9, 10, 11) Cabin 4 & 11 \$170 per night Friday, Saturday, or Sunday - Party of 4 Cabin 4 & 11 \$150 per night Monday-Thursday - Party of 4 Cabin 3, 7, 8, 9, 10 \$180 per night Friday, Saturday, or Sunday - Party of 4 Cabin 3, 7, 8, 9, 10 \$160 per night Monday-Thursday - Party of 4 Cabin 5 & 6 Together 4 people \$170 per night Cabin #5 or 6 - Party of 2 - Monday-Thursday, \$135 per night Friday, Saturday, or Sunday - \$145 per night Cabin #1 & 2 Party of 4 - Friday, Saturday, Sunday - \$210 Mon.-Thurs. - \$185 Weekly Rentals Preferred Cabins #1-11 (3 night minimum) Cabin #12 Party of 4 - \$275 per night with (4 night minimum) \$10 Charge for Boat Launching • All Cabin rates subject to tax Public Launch Nearby				SMALL PETS (Under 25 lbs.): ARE ALLOWED ONLY WITH THE PERMISSION OF MANAGEMENT \$100 per week - \$20 a day MUST BE QUIET - LEASHED AT ALL TIMES AND CLEANED UP IMMEDIATELY AFTER Check in 4:00 p.m. Check out 9:00 a.m. AM EXPRESS Discover, Visa and MasterCard accepted A 2% fee will be applied on all credit card purchases A 3.5% on AM EXPRESS Cash or Check welcome		