

# BUCK POINT RESORT

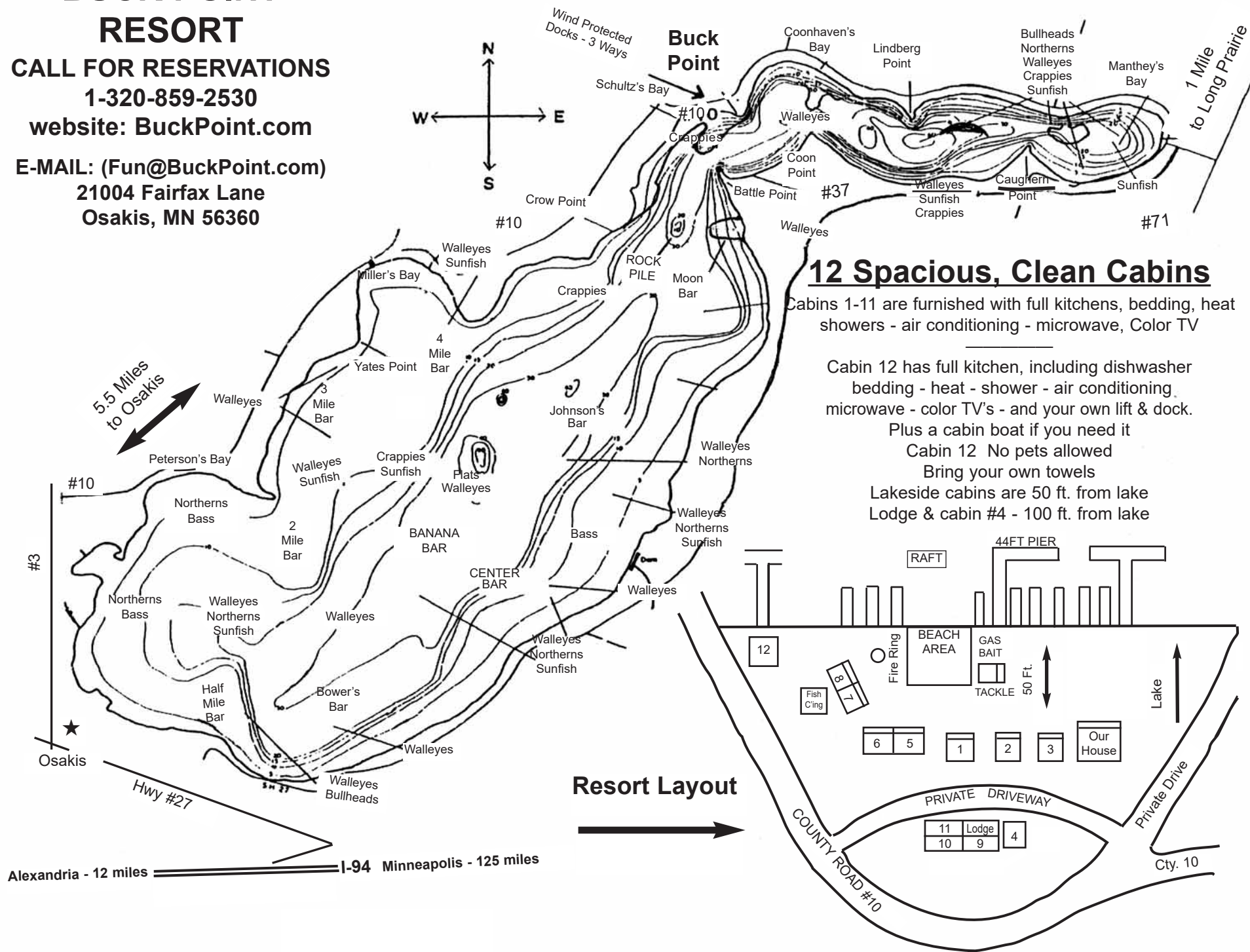
CALL FOR RESERVATIONS

1-320-859-2530

website: BuckPoint.com

E-MAIL: (Fun@BuckPoint.com)

21004 Fairfax Lane  
Osakis, MN 56360



## 12 Spacious, Clean Cabins

Cabins 1-11 are furnished with full kitchens, bedding, heat showers - air conditioning - microwave, Color TV

Cabin 12 has full kitchen, including dishwasher bedding - heat - shower - air conditioning, microwave - color TV's - and your own lift & dock.

Plus a cabin boat if you need it  
Cabin 12 No pets allowed  
Bring your own towels  
Lakeside cabins are 50 ft. from lake  
Lodge & cabin #4 - 100 ft. from lake

## AMENITIES

- \* All phone reservations held for 7 days pending arrival of deposit
- \* 3 night minimum required
- \* All prices subject to tax
- \* Balance of rent on arrival
- \* Guide available
- \* Launching nearby
- \* 2 fishing piers-lit all night - 88 ft.
- \* Level ground-no hills or banks to climb
- \* Play yard (Sand Box Area) with Rainbow PlaySystem
- \* Unattended swimming beach
- \* Chaise Lounges
- \* Live bait & tackle
- \* Dock side gas pump & oil
- \* Fish cleaning house & freezers
- \* One large fire ring for all to enjoy
- \* Please bring your own towels
- \* Gas B.B.Q. Grills for each cabin
- \* Color TV's w/ satellite - Wireless Internet Service
- \* Weeks run from Saturday to Saturday
- \* Cement Basketball Area
- \* Tables & chairs on decks
- \* Cancellation Policy:  
Should you find it necessary to cancel your reservation, please notify us immediately. A refund will be given less \$25 handling if we can fill your reservation on the same basis.
- \* When we confirm a cabin for you, we refuse all other requests for it. In turn, guests are responsible for payment of the entire reservation fee.
- \* Our business policy is intended to be fair to our guests, and yet, to prevent loss of income to our business.

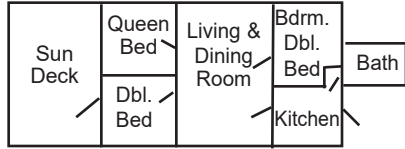
## 2023 Equipment Rental

	Day	Week
Boats	\$25.00	\$100.00
15 h.p. Motors + Gas	\$50.00	\$250.00
Boat Docking	\$ 3.00	\$ 15.00
Some boat lifts are available-but are rarely needed		
Boat Lifts (Fishing boats only)		\$ 35.00
Porto Cribs	FREE	
Fun Bugs	FREE	
Paddle Boats	FREE	
Horseshoes	FREE	
Basketball	FREE	
Swimming Raft	FREE	

# Cabin Layouts

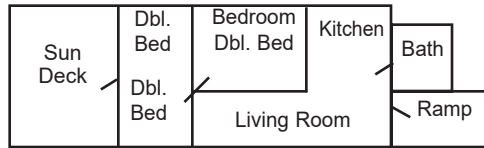
## CABIN NO. 1

Knotty Pine  
1 Queen Bed • 2 Double Beds • 3 Bedroom



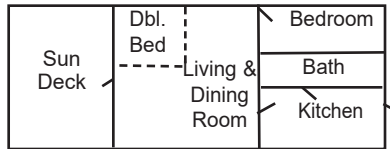
## CABIN NO. 2

Knotty Pine  
Wheelchair Access • 3 Double Beds



## CABIN NO. 3

Knotty Pine  
Total Electric • 2 Double Beds



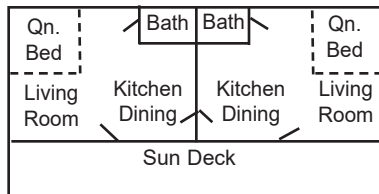
## CABIN NO. 4

Knotty Pine  
1 Queen Bed • 1 Double Bed • 2 Bedroom



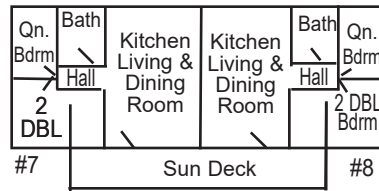
## CABIN NO. 5 & 6

Sleeps up to 2 people each



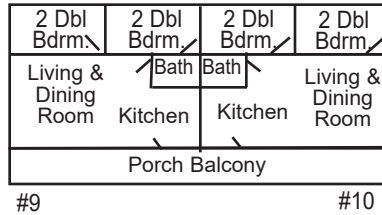
## CABIN NO. 7 & 8

Knotty Pine  
1 Queen Bed • 2 Double Beds



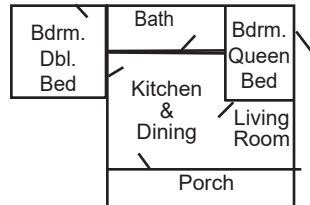
## UNITS 9 & 10

4 Double Beds - 2 Bedrooms  
Above Lodge  
Total Electric



## UNITS 11

1 Queen Bed  
1 Double Bed  
2 Bedrooms  
Wheelchair Accessible  
Lodge Ground Floor

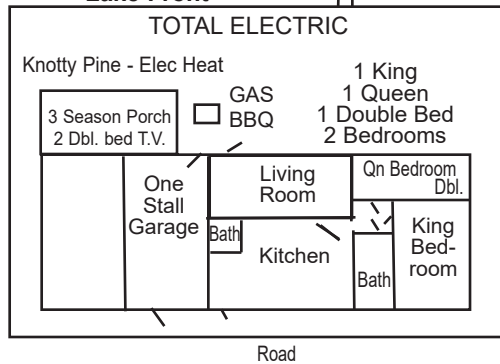


**SORRY NO PETS**

## UNIT NO. 12

**PRIVATE HOUSE**  
Lake Front

Private Dock & Lift



# ALL CABINS ARE NON SMOKING

2023 BASE RATE		Spring & Fall May 13 - June 3 Aug. 19 - Oct. 21	Summer June 3 - Aug. 19 WEEKLY ONLY SAT. - SAT.
All cabins are furnished with full kitchens, bedding - heat - showers - air conditioned - microwaves - coffee maker Color T.V.'s with Satellite and Wireless Internet - bring your own towels			
<b>Cabin 1</b> KNOTTY PINE	3 Bedroom 2 bedrooms w/double beds 1 bedroom w/Queen bed	4 people 1,050	6 people 1,300
<b>Cabin 2</b> WHEELCHAIR ACCESSIBLE KNOTTY PINE	3 Double Beds 1 bedroom w/double bed 2nd bedroom w/2 double beds	4 people 1,050	6 people 1,300
<b>Cabin 3</b> TOTAL ELECTRIC KNOTTY PINE	2 Double Beds 1 bedroom w/double bed 1 double bed in front room	2 people 850 4 people 925	4 people 1,125
<b>Cabin 4</b> KNOTTY PINE	2 Bedroom 1 bedroom w/double bed 1 bedroom w/Queen bed	2 people 750 4 people 825	4 people 975
<b>Cabin 5 or 6</b> <b>Cabin 5 &amp; 6 together</b>	1 Queen Bed One room cabin w/bath Used as one 2 rooms/2 baths 2 Kitchens - 2 TV's	2 people 700 4 people 875	2 people 850 4 people 1,075
<b>Cabin 7 or 8</b>	1 Queen Bed 2 Double Beds 1 bedroom - 1 queen 2nd bedroom - 2 double	4 people 925	5 people 1,175
KNOTTY PINE			
<b>Units 9 or 10</b> <b>Above Lodge</b> TOTAL ELECTRIC	2 Bedroom 4 Double Beds 1 bedroom w/2 double beds 2nd bedroom w/2 double beds	4 people 925	6 people 1,075
<b>Unit 11 - Lodge</b>	2 Bedroom Wheel Chair Accessible 1 bedroom w/Queen bed 2nd bedroom w/double bed Electric Heat	2 people 800 4 people 875	4 people 1,025
<b>An All Modern 2 Bedroom Total Electric House</b> <b>Unit No. 12</b> Boat Lift SORRY NO PETS Dishwasher, 1 1/2 bath 3 Season Porch • Knotty Pine • 2 Double Beds • T.V. • Elec. Heat, Air Conditioning		4 people 1,100	6 people 1,500
Over base rate per person \$25/day \$125/week Deposit required - \$300.00 per week per cabin spring & fall Deposit required - \$450.00 per week per cabin summer		<b>Day guest charge \$10.00 per person per day.</b> <b>*Guests must register at Lodge.*</b> <b>We reserve the right to limit</b>	
<b>CABIN NIGHTLY RATES - Spring &amp; Fall Only (Cabins: 3, 4, 7, 8, 9, 10, 11)</b> Cabin 4 & 11 \$150 per night Friday, Saturday, or Sunday - Party of 4 Cabin 4 & 11 \$130 per night Monday-Thursday - Party of 4 Cabin 3, 7, 8, 9, 10 \$160 per night Friday, Saturday, or Sunday - Party of 4 Cabin 3, 7, 8, 9, 10 \$140 per night Monday-Thursday - Party of 4 Cabin 5 & 6 Together 4 people \$160 per night Cabin #5 or 6 - Party of 2 - Monday-Thursday, \$115 per night Friday, Saturday, or Sunday - \$125 per night Cabin #1 & 2 Party of 4 - Friday, Saturday, Sunday - \$175 Mon.-Thurs. - \$150 Cabins #1-11 (3 night minimum) Cabin #12 Party of 4 - \$200 per night with (4 night minimum) \$10 Charge for Boat Launching • All Cabin rates subject to tax		<b>SMALL PETS (Under 25 lbs.): ARE ALLOWED ONLY WITH THE PERMISSION OF MANAGEMENT</b> \$100 per week - \$20 a day MUST BE QUIET - LEASHED AT ALL TIMES AND CLEANED UP IMMEDIATELY AFTER	
		<b>Check in 4:00 p.m. Check out 9:00 a.m.</b>  Discover, Visa and MasterCard accepted A 3% fee will be applied on all credit card purchases	