

CALL FOR RESERVATIONS
1-320-859-2530
website: BuckPoint.com

Alexandria - 12 miles I-94 Minneapolis - 125 miles



Cabin 12 has full kitchen, including dishwasher
bedding - heat - shower - air conditioning
microwave - color TV's - and your own lift & dock.

Plus a cabin boat if you need it
Cabin 12 No pets allowed
Bring your own towels

Lakeside cabins are 50 ft. from lake
Lodge & cabin #4 - 100 ft. from lake

AMENITIES

- * All phone reservations held for 7 days pending arrival of deposit
- * 3 night minimum required for Memorial Day and Labor Day
- * All prices subject to tax
- * Balance of rent on arrival
- * Guide available
- * Launching less than a block away
- * 2 fishing piers-lit all night - 88 ft.
- * Level ground-no hills or banks to climb
- * Play yard (Sand Box Area) with Rainbow PlaySystem
- * Unattended swimming beach
- * Chaise Lounges
- * Live bait & tackle
- * Dock side gas pump & oil
- * Fish cleaning house & freezers
- * One large fire ring for all to enjoy
- * Please bring your own towels
- * Gas B.B.Q. Grills for each cabin
- * Color TV's w/ satellite - Wireless Internet Service
- * Weeks run from Saturday to Saturday
- * Cement Basketball Area
- * Picnic tables & chairs on decks
- * Cancellation Policy:
Should you find it necessary to cancel your reservation, please notify us immediately. A refund will be given less \$25 handling if we can fill your reservation on the same basis.
- * When we confirm a cabin for you, we refuse all other requests for it. In turn, guests are responsible for payment of the entire reservation fee.
- * Our business policy is intended to be fair to our guests, and yet, to prevent loss of income to our business.

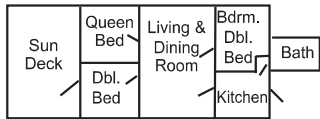
2022 Equipment Rental

	Day	Week
Boats	\$25.00	\$100.00
15 h.p. Motors + Gas	\$50.00	\$250.00
Boat Docking	\$ 3.00	\$ 15.00
Some boat lifts are available-but are rarely needed		
Boat Lifts (Fishing boats only)		\$ 35.00
Porto Cribs	FREE	
Fun Bugs	FREE	
Paddle Boats	FREE	
Horseshoes	FREE	
Basketball	FREE	
Swimming Raft	FREE	

Cabin Layouts

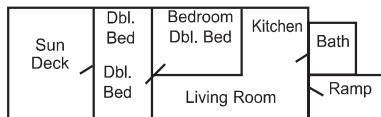
CABIN NO. 1

Knotty Pine
1 Queen Bed • 2 Double Beds • 3 Bedroom



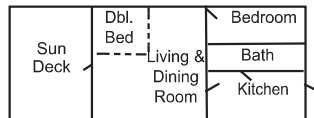
CABIN NO. 2

Knotty Pine
Wheelchair Access • 3 Double Beds



CABIN NO. 3

Knotty Pine
Total Electric • 2 Double Beds



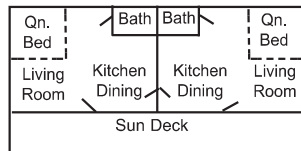
CABIN NO. 4

Knotty Pine
1 Queen Bed • 1 Double Bed • 2 Bedroom



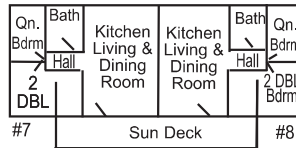
CABIN NO. 5 & 6

Sleeps up to 2 people each



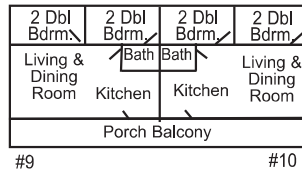
CABIN NO. 7 & 8

Knotty Pine
1 Queen Bed • 2 Double Beds



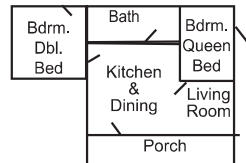
UNITS 9 & 10

4 Double Beds - 2 Bedrooms
Above Lodge
Total Electric



UNITS 11

1 Queen Bed
1 Double Bed
2 Bedrooms
Wheelchair Accessible
Lodge Ground Floor

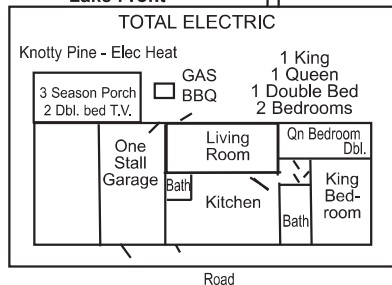


**SORRY
NO PETS**

UNIT NO. 12

**PRIVATE HOUSE
Lake Front**

Private
Dock & Lift



ALL CABINS ARE NON SMOKING

2021 BASE RATE			Spring & Fall May 14 - June 4 Aug. 20 - Oct. 22		Summer June 4 - Aug. 20 WEEKLY ONLY SAT. - SAT.	
All cabins are furnished with full kitchens, bedding - heat - showers - air conditioned - microwaves - coffee maker Color T.V.'s with Satellite and Wireless Internet - bring your own towels						
Cabin 1 KNOTTY PINE	3 Bedroom	2 bedrooms w/double beds 1 bedroom w/Queen bed	4 people	1,000	6 people	1,300
Cabin 2 WHEELCHAIR ACCESSIBLE KNOTTY PINE	3 Double Beds	1 bedroom w/double bed 2nd bedroom w/2 double beds	4 people	1,000	6 people	1,300
Cabin 3 TOTAL ELECTRIC KNOTTY PINE	2 Double Beds	1 bedroom w/double bed 1 double bed in front room	2 people 4 people	825 900	4 people	1,125
Cabin 4 KNOTTY PINE	2 Bedroom	1 bedroom w/double bed 1 bedroom w/Queen bed	2 people 4 people	725 800	4 people	950
Cabin 5 or 6 Cabin 5 & 6 together	1 Queen Bed	One room cabin w/bath Used as one 2 rooms/2 baths 2 Kitchens - 2 TV's	2 people 4 people	675 850	2 people 4 people	850 1,075
Cabin 7 or 8 KNOTTY PINE	1 Queen Bed 2 Double Beds	1 bedroom - 1 queen 2nd bedroom - 2 double	4 people	900	5 people	1,150
Units 9 or 10 Above Lodge TOTAL ELECTRIC	2 Bedroom 4 Double Beds	1 bedroom w/2 double beds 2nd bedroom w/2 double beds	4 people	900	6 people	1,050
Unit 11 - Lodge	2 Bedroom Wheel Chair Accessible	1 bedroom w/Queen bed 2nd bedroom w/double bed Electric Heat	2 people 4 people	775 850	4 people	1,000
An All Modern 2 Bedroom Total Electric House Unit No. 12 Boat Lift SORRY NO PETS Dishwasher, 1 1/2 bath 3 Season Porch • Knotty Pine • 2 double beds • T.V. • Elec. heat			4 people	1,100	6 people	1,500
<u>Over base rate per person \$25/day \$125/week</u> Deposit required - \$300.00 per week per cabin spring & fall Deposit required - \$450.00 per week per cabin summer			Day guest charge \$10.00 per person per day. *Guests must register at Lodge. We reserve the right to limit			
CABIN NIGHTLY RATES - Spring & Fall Only (Cabins: 3, 4, 7, 8, 9, 10, 11) Cabin 4 & 11 \$150 per night Friday, Saturday, or Sunday - Party of 4 Cabin 4 & 11 \$130 per night Monday-Thursday - Party of 4 Cabin 3, 7-10 \$160 per night Friday, Saturday, or Sunday - Party of 4 Cabin 3, 7-10 \$140 per night Monday-Thursday - Party of 4 Cabin 5 & 6 Together 4 people \$160 per night Cabin #5 or 6 - Party of 2 - Monday-Thursday, \$100 per night Friday, Saturday, or Sunday - \$115 per night Cabin #1 & 2 Party of 4 - Friday, Saturday, Sunday - \$175 Mon.-Thurs. - \$150 Cabins 1 & 2 (3 night minimum) Cabins 3 - 11 (2 night minimum) (We reserve the right to ask for a 3 night minimum) Cabin #12 - Party of 4 - \$200 per night with (4 night minimum) \$10 Charge for Boat Launching • All Cabin rates subject to tax			SMALL PETS (Under 25 lbs.): ARE ALLOWED ONLY WITH THE PERMISSION OF MANAGEMENT \$100 per week - \$20 a day MUST BE QUIET - LEASHED AT ALL TIMES AND CLEANED UP IMMEDIATELY AFTER			
			<u>Check in 4:00 p.m. Check out 9:00 a.m.</u> <i>Discover, Visa and MasterCard accepted</i> A 3% fee will be applied on all credit card purchases			