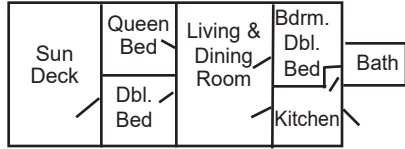


Cabin Layouts

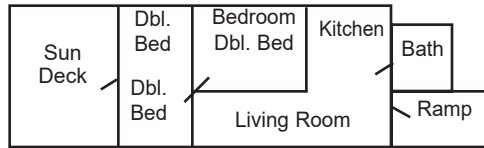
CABIN NO. 1

Knotty Pine
1 Queen Bed • 2 Double Beds • 3 Bedroom



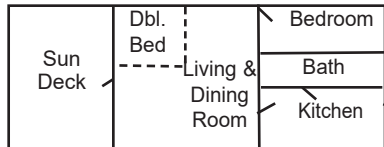
CABIN NO. 2

Knotty Pine
Wheelchair Access • 3 Double Beds



CABIN NO. 3

Knotty Pine
Total Electric • 2 Double Beds



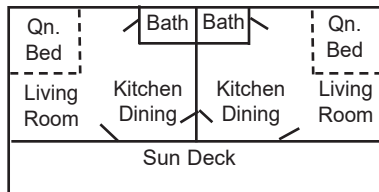
CABIN NO. 4

Knotty Pine
1 Queen Bed • 1 Double Bed • 2 Bedroom



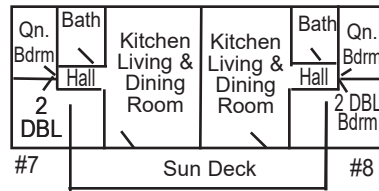
CABIN NO. 5 & 6

Sleeps up to 2 people each



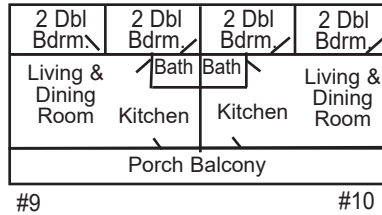
CABIN NO. 7 & 8

Knotty Pine
1 Queen Bed • 2 Double Beds



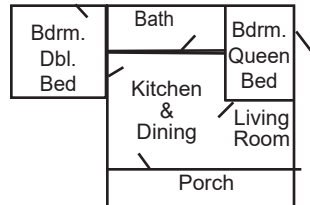
UNITS 9 & 10

4 Double Beds - 2 Bedrooms
Above Lodge
Total Electric



UNITS 11

1 Queen Bed
1 Double Bed
2 Bedrooms
Wheelchair Accessible
Lodge Ground Floor

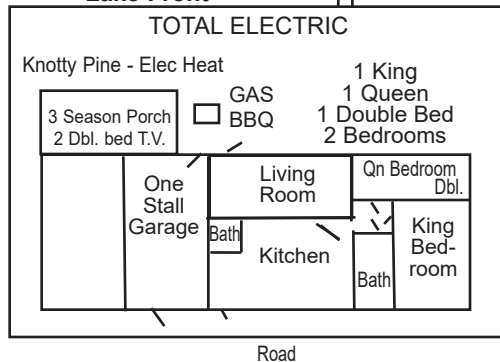


**SORRY
NO PETS**

UNIT NO. 12

**PRIVATE HOUSE
Lake Front**

Private
Dock & Lift



ALL CABINS ARE NON SMOKING

2021 BASE RATE		Spring & Fall May 14 - June 4 Aug. 20 - Oct. 22	Summer June 4 - Aug. 20 WEEKLY ONLY SAT. - SAT.
All cabins are furnished with full kitchens, bedding - heat - showers - air conditioned - microwaves - coffee maker Color T.V.'s with Satellite and Wireless Internet - bring your own towels			
Cabin 1 KNOTTY PINE	3 Bedroom 2 bedrooms w/double beds 1 bedroom w/Queen bed	4 people 1,000	6 people 1,300
Cabin 2 WHEELCHAIR ACCESSIBLE KNOTTY PINE	3 Double Beds 1 bedroom w/double bed 2nd bedroom w/2 double beds	4 people 1,000	6 people 1,300
Cabin 3 TOTAL ELECTRIC KNOTTY PINE	2 Double Beds 1 bedroom w/double bed 1 double bed in front room	2 people 825 4 people 900	4 people 1,125
Cabin 4 KNOTTY PINE	2 Bedroom 1 bedroom w/double bed 1 bedroom w/Queen bed	2 people 725 4 people 800	4 people 950
Cabin 5 or 6 Cabin 5 & 6 together	1 Queen Bed One room cabin w/bath Used as one 2 rooms/2 baths 2 Kitchens - 2 TV's	2 people 675 4 people 850	2 people 850 4 people 1,075
Cabin 7 or 8	1 Queen Bed 2 Double Beds 1 bedroom - 1 queen 2nd bedroom - 2 double	4 people 900	5 people 1,150
KNOTTY PINE			
Units 9 or 10 Above Lodge TOTAL ELECTRIC	2 Bedroom 4 Double Beds 1 bedroom w/2 double beds 2nd bedroom w/2 double beds	4 people 900	6 people 1,050
Unit 11 - Lodge	2 Bedroom Wheel Chair Accessible 1 bedroom w/Queen bed 2nd bedroom w/double bed Electric Heat	2 people 775 4 people 850	4 people 1,000
An All Modern 2 Bedroom Total Electric House Unit No. 12 Boat Lift SORRY NO PETS Dishwasher, 1 1/2 bath 3 Season Porch • Knotty Pine • 2 double beds • T.V. • Elec. heat		4 people 1,100	6 people 1,500
Over base rate per person \$25/day \$125/week Deposit required - \$300.00 per week per cabin spring & fall Deposit required - \$450.00 per week per cabin summer		Day guest charge \$10.00 per person per day. *Guests must register at Lodge. We reserve the right to limit	
CABIN NIGHTLY RATES - Spring & Fall Only (Cabins: 3, 4, 7, 8, 9, 10, 11) Cabin 4 & 11 \$150 per night Friday, Saturday, or Sunday - Party of 4 Cabin 4 & 11 \$130 per night Monday-Thursday - Party of 4 Cabin 3, 7-10 \$160 per night Friday, Saturday, or Sunday - Party of 4 Cabin 3, 7-10 \$140 per night Monday-Thursday - Party of 4 Cabin 5 & 6 Together 4 people \$160 per night Cabin #5 or 6 - Party of 2 - Monday-Thursday, \$100 per night Friday, Saturday, or Sunday - \$115 per night Cabin #1 & 2 Party of 4 - Friday, Saturday, Sunday - \$175 Mon.-Thurs. - \$150 Cabins 1 & 2 (3 night minimum) Cabins 3 - 11 (2 night minimum) (We reserve the right to ask for a 3 night minimum) Cabin #12 - Party of 4 - \$200 per night with (4 night minimum) \$10 Charge for Boat Launching • All Cabin rates subject to tax		SMALL PETS (Under 25 lbs.): ARE ALLOWED ONLY WITH THE PERMISSION OF MANAGEMENT \$100 per week - \$20 a day MUST BE QUIET - LEASHED AT ALL TIMES AND CLEANED UP IMMEDIATELY AFTER	
		Check in 4:00 p.m. Check out 9:00 a.m. Discover, Visa and MasterCard accepted A 3% fee will be applied on all credit card purchases	